



Guarantee, repairs and service

All Heat luminaires have a term of guarantee of 1 year starting from the delivery date. For the guarantee conditions we refer you to articles XI and XII of the general terms for sales and delivery for the metal and electro technical industry as deposited by the FME-CWM association with the registry of the district court in The Hague, the Netherlands.

Guarantee is only given if the guidelines included in these instructions are strictly adhered to. If the purchaser does repairs personally, all guarantee ceases. Repairs can only be carried out when the luminaire is taken down as a whole and when the electricity cable is removed from the power supply. Service by RHP outside the term of guarantee is possible by mutual agreement.

HEAT is designed and produced by Robin Hood Productions,
Joris van den Berghweg 103, 1067 HP Amsterdam
+31 (0)20 620 8347 (t), www.robinhoodproductions.com (i),
info@robinhoodproduction.com (m)
Model and name of HEAT luminaire are protected.



Instructions for mounting and use



Robin Hood Productions
Joris van den Berghweg 103
1067 HP Amsterdam
Holland

www.robinhoodproduction.com
Phone +31 (0)20 6 20 83 47
Mail info@robinhoodproduction.com
Web www.robinhoodproduction.com



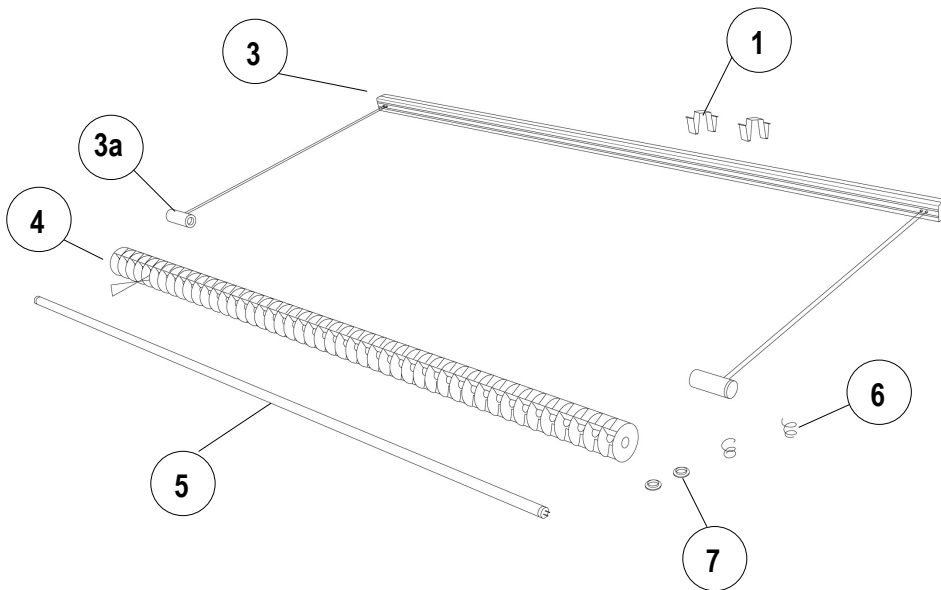
HEAT, instructions for mounting and use

Robin Hood Productions Phone +31 (0)20 6 20 83 47
 Joris van den Berghweg 101 Mail info@robinhoodproduction.com
 1067 HP Amsterdam Web www.robinhoodproduction.com
 The Netherlands

Instructions for use Heat luminaire

Standard accessories of Heat luminaries are:

1. clamp (2 x)
2. socket, ring & round head screw (2 x)
3. base with cable and from the ends (1x);
- 3a. wire and fixtures (2 x)
4. reflecting slats (1 x)
5. neon tube(1 x)
6. spring (2 x)
7. ring
8. (latex) gloves




Changing the neon tube

CHANGING THE NEON TUBE MUST BE DONE WITH THE POWER SWITCHED OFF. IF POWER POINTS ARE CONNECTED MAKE SURE THE LIGHT SWITCH IS TURNED OFF.

HEAT luminaires are provided with neon tubes type "T5". On one end of the tube you will find the capacity (wattage) and colour number of the tube.

The neon tube in your HEAT luminaire is the following type:



In your case: Tube: T5- Watt

Colour: 8

1. Pull one side of the neon tube carefully out of the fixture. Make sure that a second person supports the neon tube and the reflecting slats. Subsequently pull out the other end of the neon tube.
2. Remove the reflecting slats and springs carefully.
3. Take a new neon tube and see "Mounting the neon tube and reflecting slats"

Maintenance and cleaning

Never use abrasives or scourers when cleaning Heat luminaires.

Normal cleaning:

Heat can be cleaned with a damp cloth and, if necessary, nonabrasive cleaning fluid (base) or with a duster (reflecting slats).

Intensive cleaning:

Persistent fingerprints or grease stains can be removed with a soft cloth using (undiluted) alcohol or (diluted) all-purpose cleaner. Alcohol or soap remains can be removed with a damp cloth.



Connecting the luminaire

PLACE THE NEON TUBE BEFORE CONNECTING THE LUMINAIRE. SEE INSTRUCTIONS FOR USE: "CHANGING THE NEON TUBE". ALWAYS USE AN EARTHED SOCKET (220V-240V) WHEN CONNECTING THE LUMINAIRE AND MAKE SURE THE POWER IS TURNED OFF. IF POWER POINTS ARE CONNECTED MAKE SURE THE LIGHT SWITCH IS TURNED OFF.

Luminaire with plug attached to the electricity cable:

Connect the luminaire by plugging it into the socket. Make sure the cable is not too taut, but is "loosely" suspended. Switch on the light switch.

Luminaire without plug attached to the electricity cable:

First connect the earthed wire (green/yellow), then the neutral wire (blue), and subsequently the load wire (brown) of the cable to the matching coloured wires within the socket.

If the power points are connected the load wire (brown) must be connected to the black wire of the socket. When connecting these wires use a certified connector.

Make sure the connection of the electricity cable to the socket is relieved from possible strain by using a strain release pushing. Switch on the light switch.

Because the neon tube needs to "warm up" it will take a few minutes before an "optimal light output" is reached.

Also note:

Replacing the connecting electricity cable (if necessary) must be left to the expertise of Robin Hood Productions or similarly qualified persons.



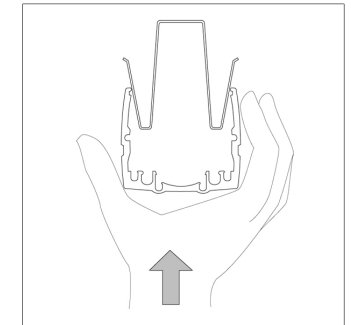
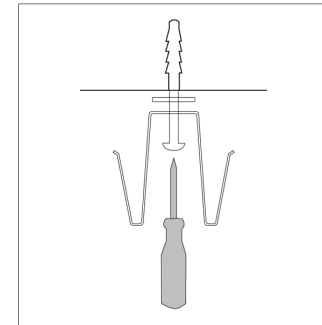
Hanging up / mounting the luminaire

BEFORE CONNECTING THE POWER SUPPLY TO A SOCKET THE LUMINAIRE MUST BE SUSPENDED PROPERLY (BE ATTACHED TO THE CEILING). PLEASE NOTE:

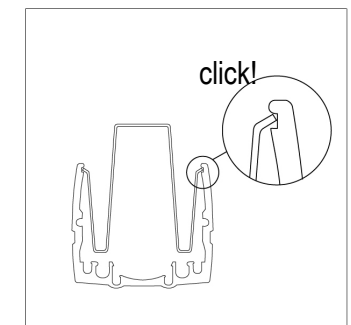
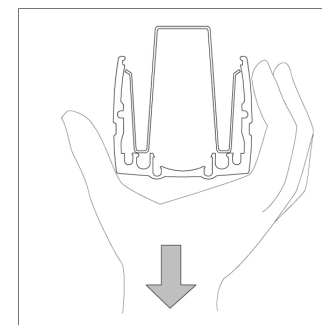
The mirror's edges may be rather sharp. You are strongly advised when handling the mirror to wear the protective gloves provided and handle the mirror with care. If the gloves are not used when handling the mirror, Robin Hood Productions can not be held responsible for any possible injury.

Hanging up

1. Attach the clamps with supplied screw, ring and socket to the ceiling. (see illustration below)
2. Push the base over the clamps against the ceiling. (see illustration below)



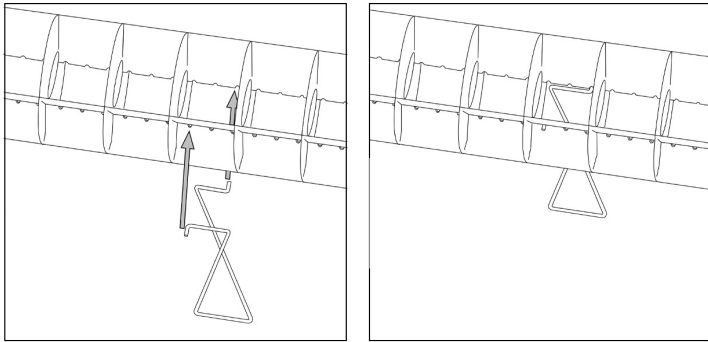
3. Pull the base carefully down from the ceiling until you hear/feel a click. (see illustrations below)
4. Mount the neon tube and the reflecting slats; see "Mounting the neon tube and the reflecting slats"





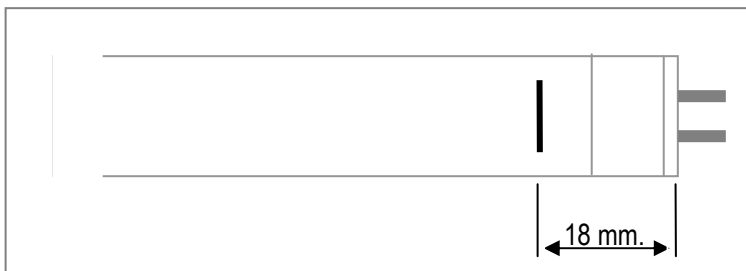
Mounting the neon tube and reflecting slats

1. Place the handle on the reflecting slats. (see illustration below)



2. Push the ring in the hole at both ends of the reflecting slats, see **A**.
3. Slide the spring over the neon tube. Make sure that the narrow side of the spring faces the fixture. (see illustration below)
4. Push the neon tube in one of the fixtures as far as indicated with the line on the neon tube.

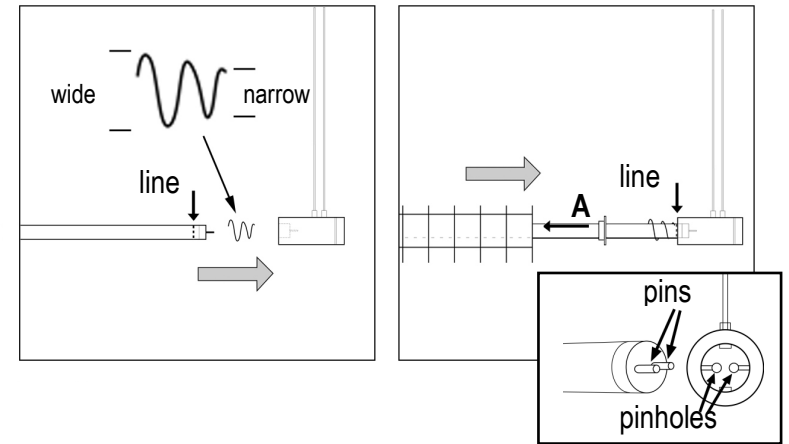
note: The neon tube has not (yet) been marked with a line. With a watterresistant marker the neon tube can be marked as illustrated bellow (scale 1:1)



Make sure that the pins of the neon tube are in good position in comparison with the fixture. (see illustration on the next page)



5. Slide the reflecting slats carefully over the neon tube.



6. Slide the spring over the neon tube. Make sure that the wide side of the spring faces the reflecting slats.
7. Make sure that a **second person** holds the fixture, neon tube and reflecting slats while the other side of the neon tube is put in the second fixture. **Make sure that the pins of the neon tube are in good position in comparison with the fixture. Push the neon tube in the fixture as far as indicated with the line on the neon tube.** (see illustration below)
8. Connect the luminaire, see "Connecting the luminaire"

